



Secondary school and The Samworth Enterprise Academy (primary) catchment areas – proposed changes for 2014 admissions

Public consultation

20 December 2012 – 28 February 2013

Aims

- To promote fair access to secondary school places.
- To provide a single secondary catchment area school for each address in the city.
- To remove secondary “linked areas”.
- To align primary and secondary catchment areas.

Why are we proposing changes?

- Secondary School catchment areas have not been changed significantly since the city became a unitary authority in 1997.
- The council has closed five secondary schools since then and operated a system of priority and linked areas for school admissions.
- The proposals we are putting forward will provide a single secondary catchment school for each address in the city.
- The current catchment area for The Samworth Enterprise Academy (primary) overlaps with Marriot Primary School's catchment area – the Academy is proposing to remove the overlap.

Terminology

- Throughout the consultation the terms “priority area” and “linked area” are used to refer to the current arrangements.
- The term “catchment area” is used for the proposed new arrangements.

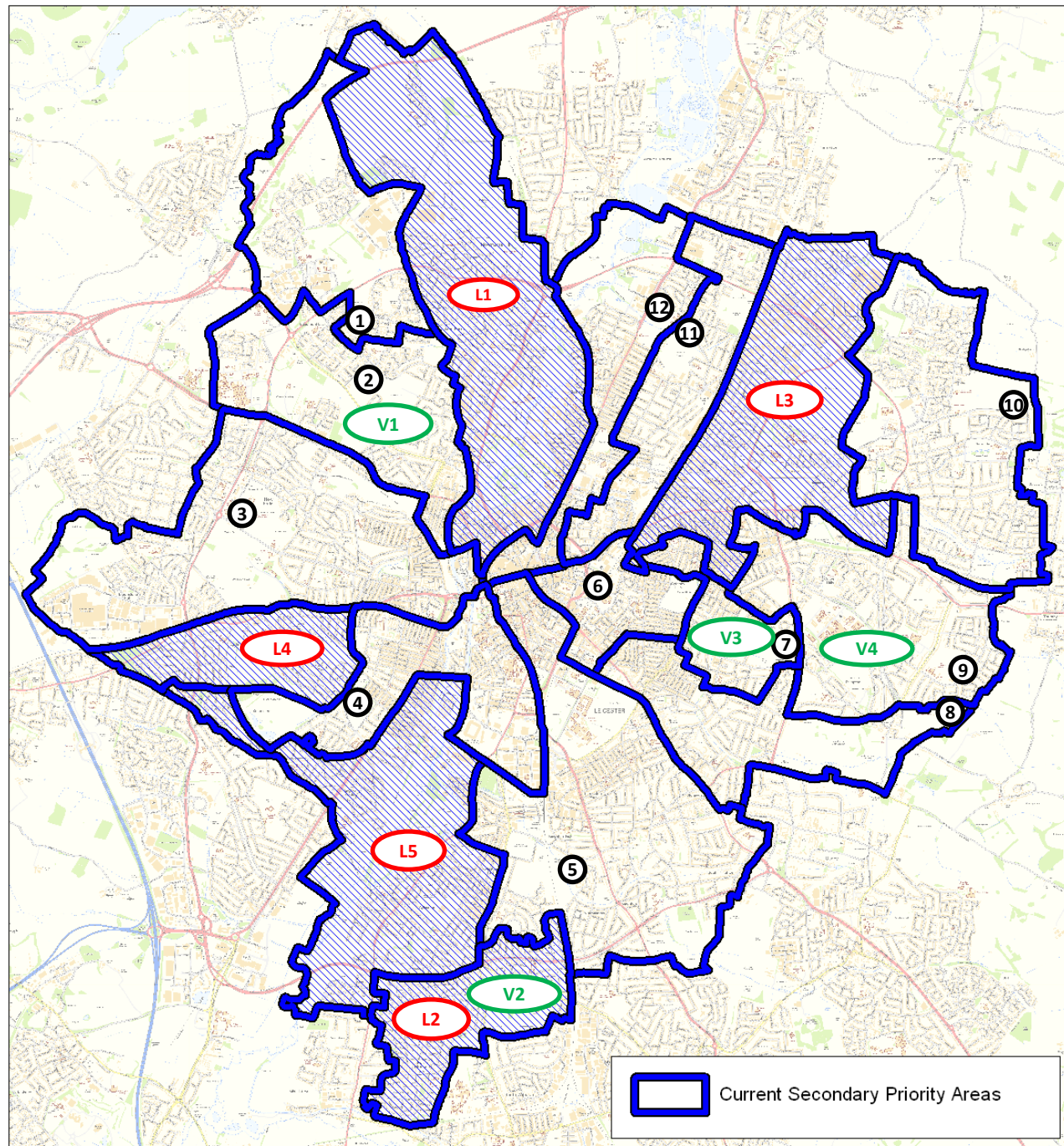
Map 1

This map shows the current location of each secondary school and layout of the current priority areas of each secondary school in the city. English Martyrs, St. Paul's and Madani do not have a catchment area.

- ① Babington Community College
- ② Beaumont Leys School
- ③ New College Leicester
- ④ Fullhurst Community College
- ⑤ The Lancaster School/Sir Jonathan North CC
- ⑥ Moat Community College
- ⑦ Crown Hills Community College
- ⑧ Judgemeadow Community College
- ⑨ The City of Leicester College
- ⑩ Hamilton Community College
- ⑪ Soar Valley College
- ⑫ Rushey Mead School

- L1 Link Area 1 (former John Ellis CC)
- L2 Link Area 2 (former Mary Linwood School)
- L3 Link Area 3 (former Mundella CC)
- L4 Link Area 4 (former Wycliffe CC)
- L5 Link Area 5 (former Riverside B&E C)

- V1 English Martyrs Catholic School
- V2 The Samworth Enterprise Academy
- V3 Madani Boy's & Girl's Schools
- V4 St Paul's Catholic School



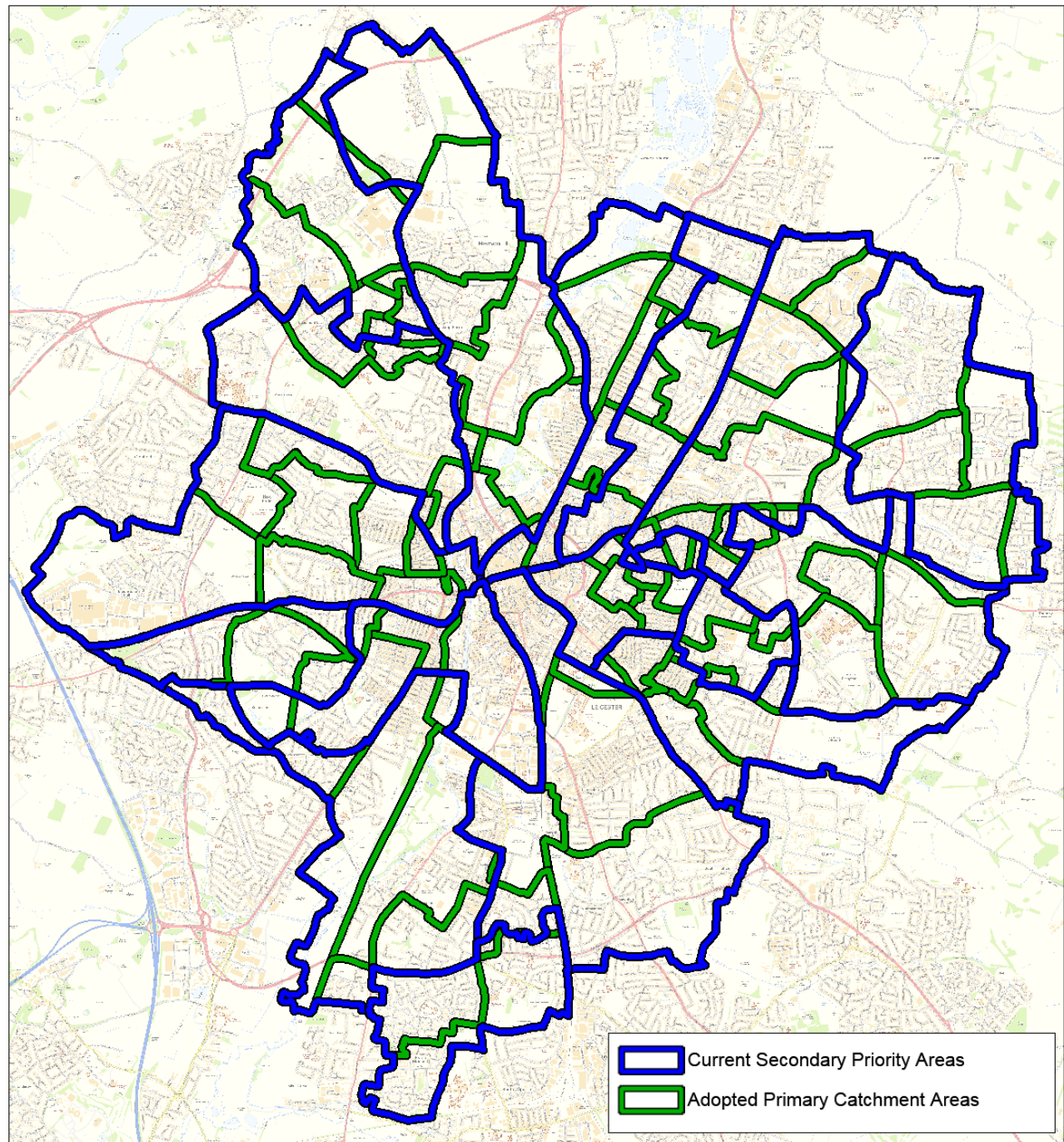
Map 2

This map shows the current secondary priority and linked areas overlaid on the primary catchment areas adopted in April 2012, which will become effective in September 2013.

You can see that some primary priority areas are divided by two or more secondary school priority or linked areas.

The impact of the current arrangements is that children who attend their priority area primary school are not always given priority to the same secondary school as their friends.

The methodology used to redraw the secondary catchment areas addresses this issue.



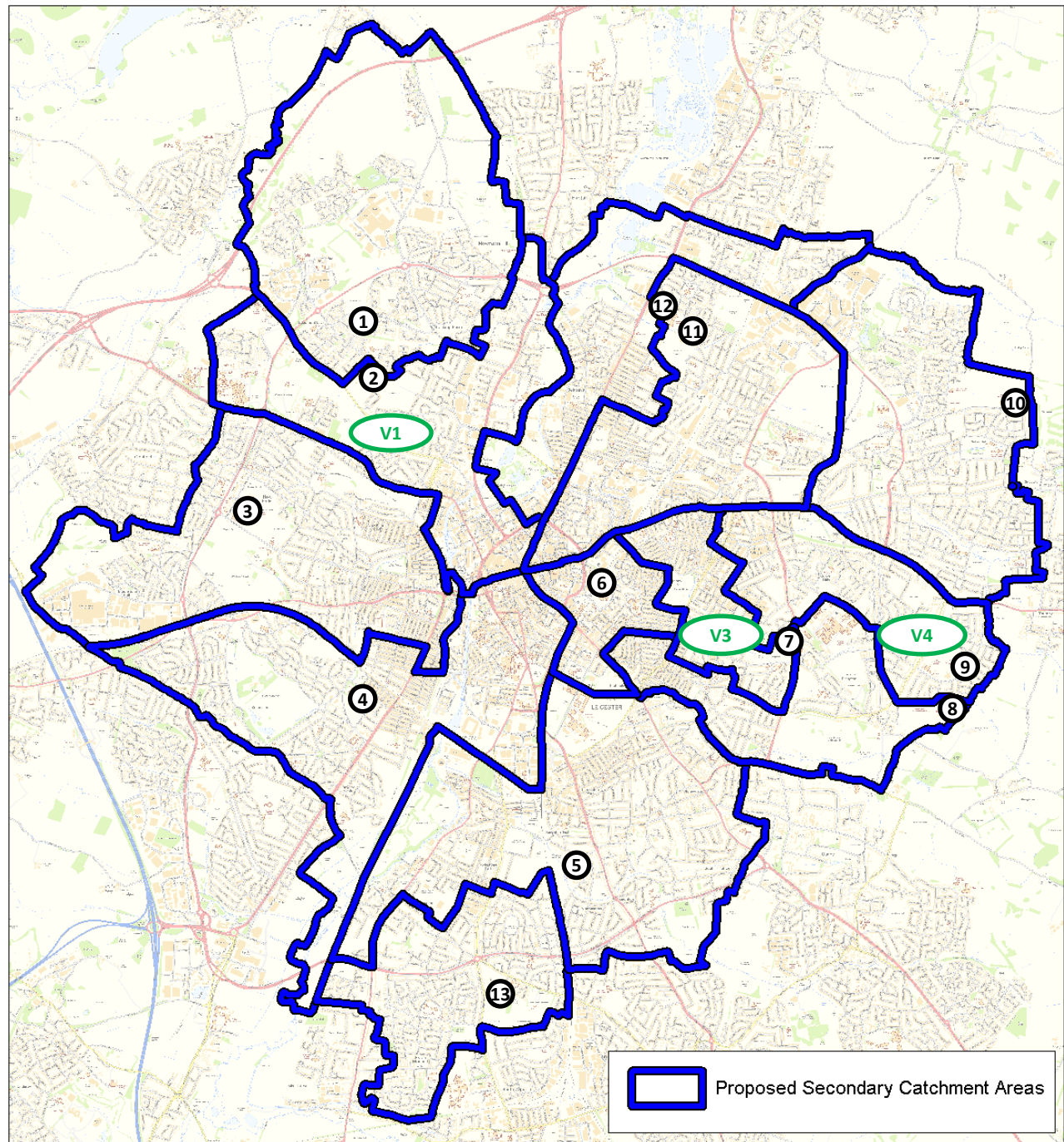
Map 3

This map shows the proposed catchment areas for the 14 secondary schools (English Martyrs, St. Pauls and Madani do not have catchment areas).

Detailed maps of each school's catchment area are included in the secondary appendix document.

- ① Babington Community College
- ② Beaumont Leys School
- ③ New College Leicester
- ④ Fullhurst Community College
- ⑤ The Lancaster School/Sir Jonathan North CC
- ⑥ Moat Community College
- ⑦ Crown Hills Community College
- ⑧ Judgemeadow Community College
- ⑨ The City of Leicester College
- ⑩ Hamilton Community College
- ⑪ Soar Valley College
- ⑫ Rushey Mead School
- ⑬ The Samworth Enterprise Academy

- V1 English Martyrs Catholic School
- V3 Madani Boy's & Girl's Schools
- V4 St Paul's Catholic School

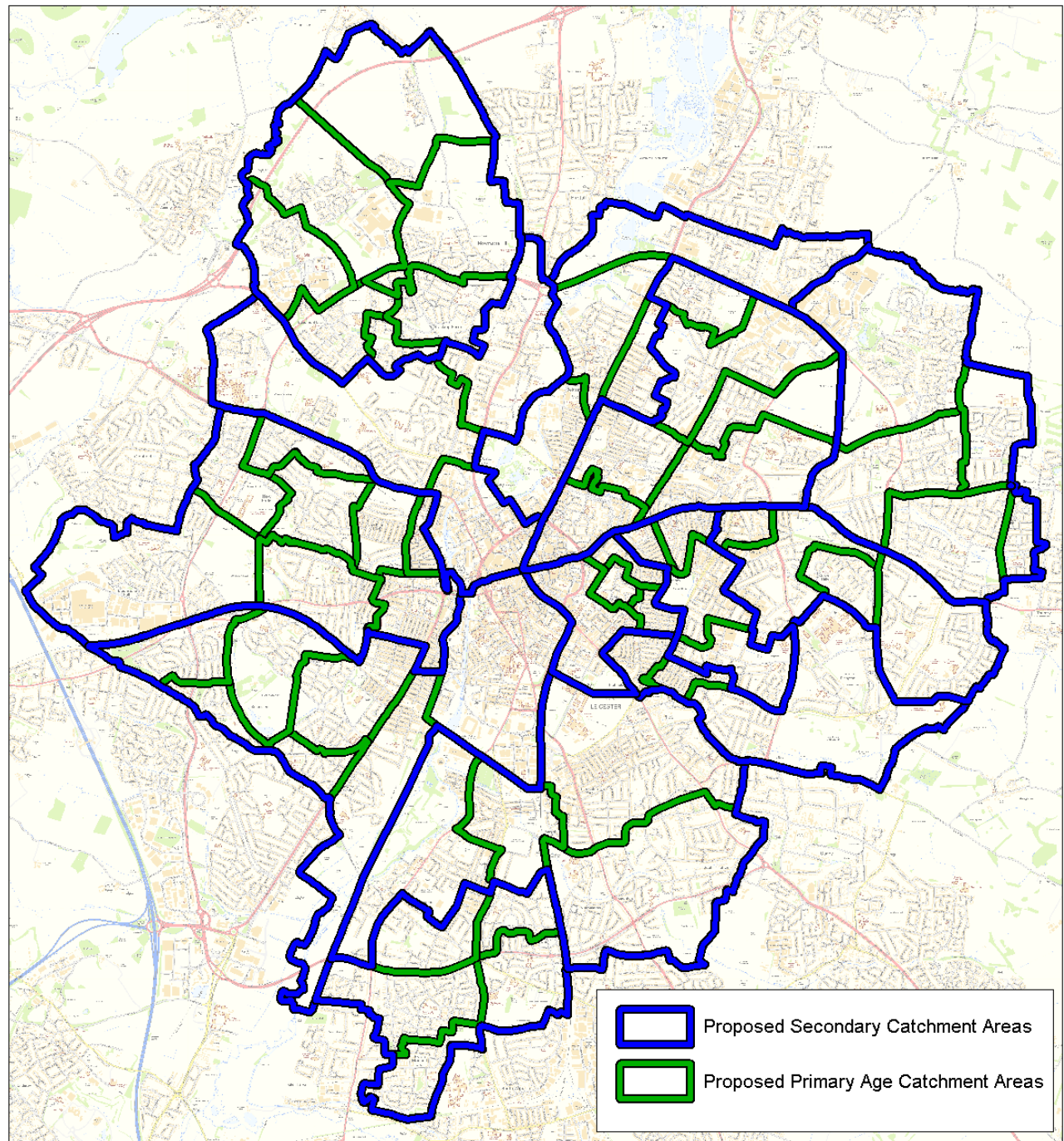


Map 4

This map shows the proposed secondary catchment areas overlaid on the 2013 primary catchment areas.

Each secondary catchment has been built up from a number of whole primary school catchment areas.

The alignment of boundaries ensures that if children attend their catchment area primary school they will then be in the same secondary school catchment area as all other children who reside in that primary school's catchment area.

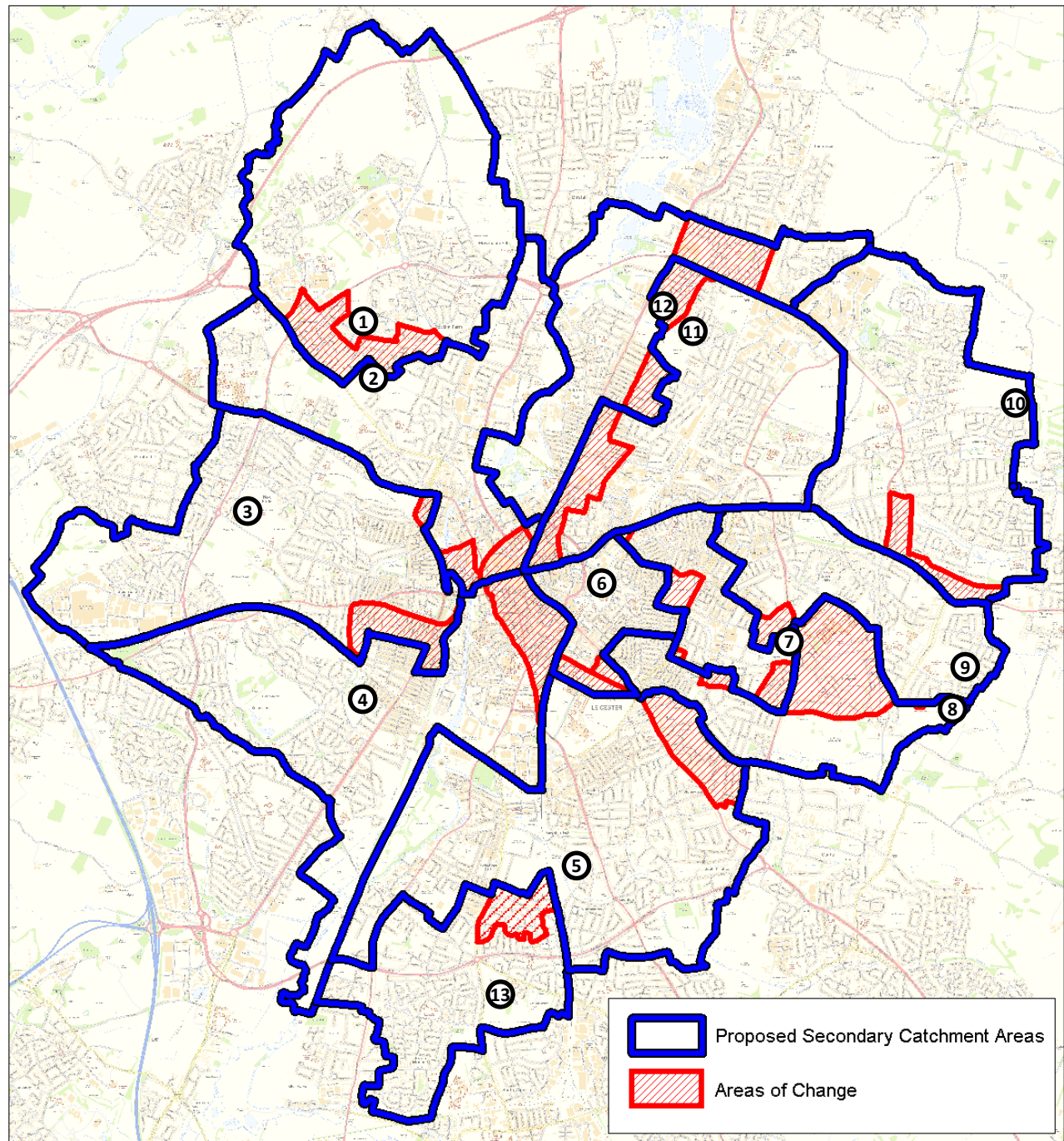


Map 5

This slide shows the geographic areas that are part of a secondary school's current priority area but become part of another secondary school's catchment area if the new catchment areas are adopted.

Address details can be found in the secondary appendix document.

- ① Babington Community College
- ② Beaumont Leys School
- ③ New College Leicester
- ④ Fullhurst Community College
- ⑤ The Lancaster School/Sir Jonathan North CC
- ⑥ Moat Community College
- ⑦ Crown Hills Community College
- ⑧ Judgemeanow Community College
- ⑨ The City of Leicester College
- ⑩ Hamilton Community College
- ⑪ Soar Valley College
- ⑫ Rushey Mead School
- ⑬ The Samworth Enterprise Academy

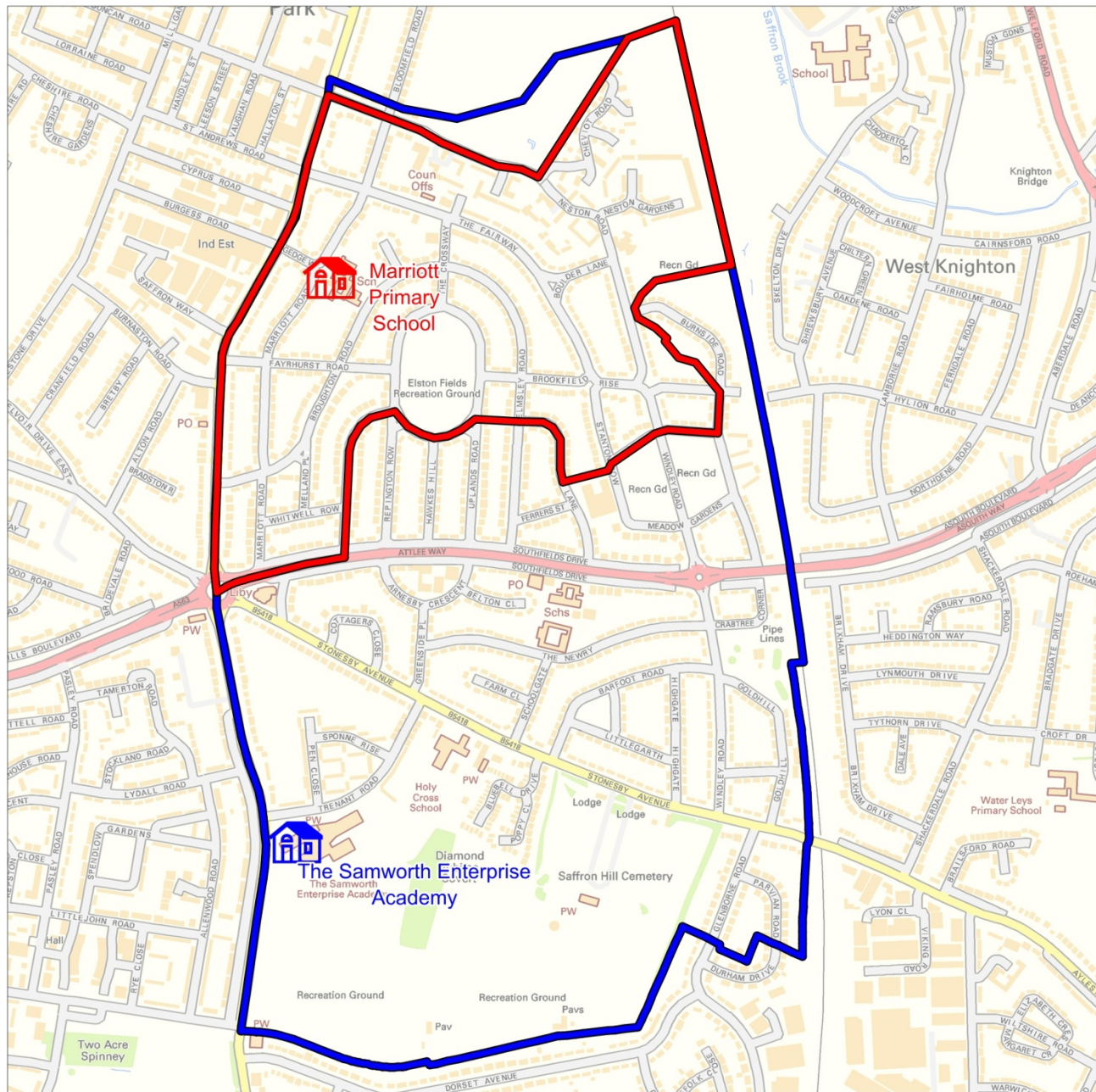


Map 6

This map shows the current catchment area for The Samworth Enterprise Academy Primary and the overlap with the catchment area for Marriott Primary School.

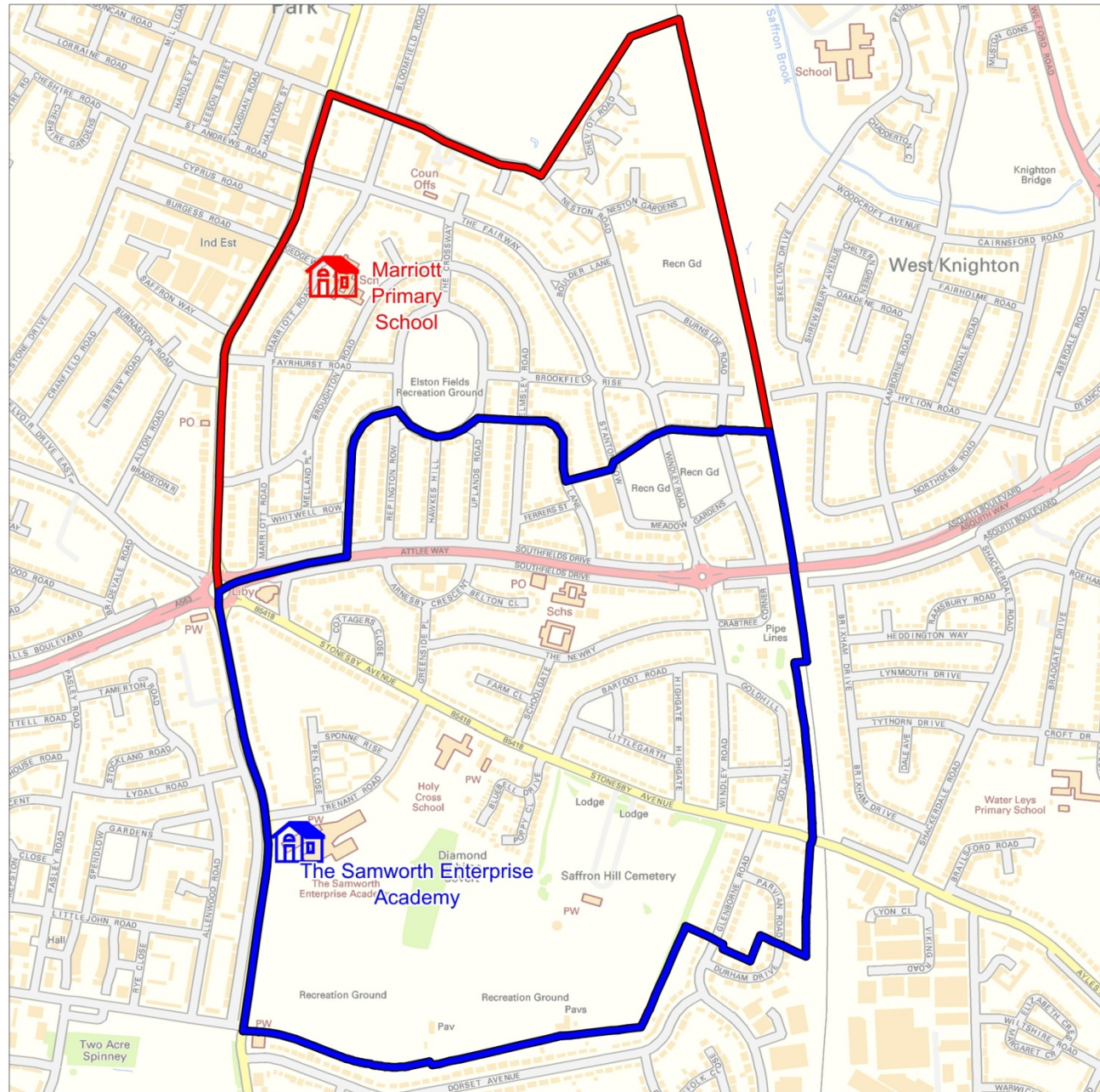
The Academy is proposing to remove the overlap with Marriott Primary.

This proposal will result in every address within the City being linked to one primary school catchment area and one secondary school catchment area.



Map 7

This map shows the proposed catchment area for The Samworth Enterprise Academy Primary.



What happens next?

- The public consultation is open from 20 Dec 2012 until 28 Feb 2013 (10 weeks).
- Responses will be analysed and final proposals drawn up (March 2013).
- Trust school governors and The Academy governors will make their individual decisions (March 2013).
- A final report will be submitted to Leicester City Council Executive in April 2013.
- All admission authorities must determine their admission arrangements by 15 April 2013.
- Admission arrangements to be published on the council website by 1 May 2013.
- Revised catchment areas will take effect for admissions for the academic year 2014-15.