

Beaumont Leys Bus interchange

Philip Cuss

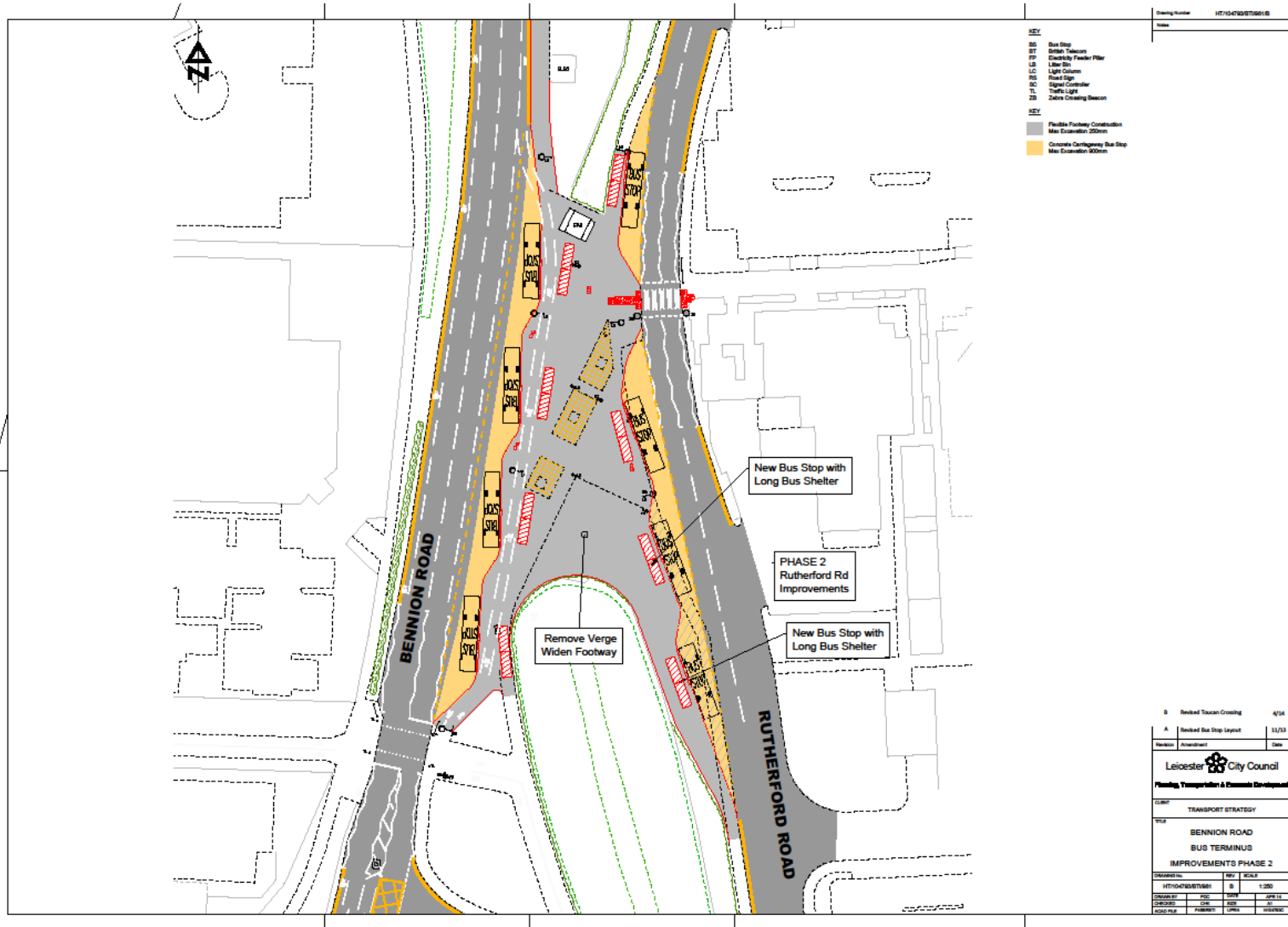
Existing



Improvements

- Improved passenger waiting facilities
- JC Decaux shelters
- Comprehensive information
- Real-time displays
- Cycle path and cycle parking incorporated
- Saw-tooth approach for buses
- 2 phases of work

Proposed design



Background and programme

Reasons for scheme:

- Future and current demand – housing growth
- Increase bus use
- LSTF funded

Programme:

- Consulting with users and Ward Community Meeting
- Detailed design incorporating user feedback – eg cycle path route
- On site in January 2015