

Connecting Leicester

Creating a thriving heart within the city



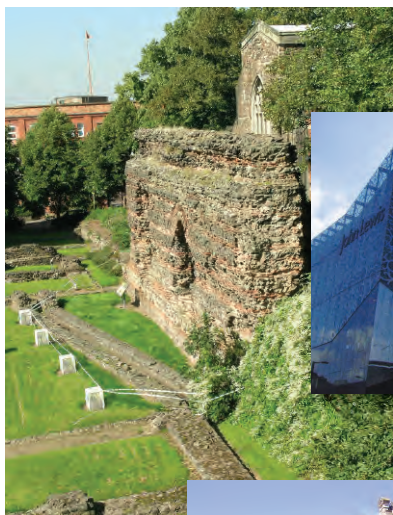


Leicester is a great place to live, work and visit, but it can be even better.

Looking back, some developments in the city, such as the ring road, have created barriers that make it difficult for people to move from one area to another and enjoy all the exciting things Leicester city centre has to offer.

We have an opportunity to take away some of these barriers and greatly improve connections between key places within and next to the city centre.

City Mayor, Sir Peter Soulsby, has set out a vision to create a thriving heart of the city by improving the connections between shopping, leisure, heritage, housing and transport facilities, all linked by accessible high quality pedestrian routes.

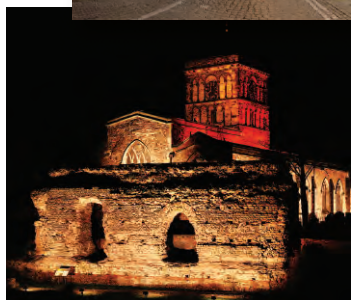
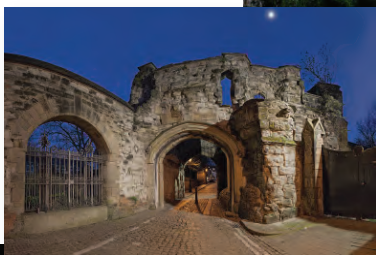


Our priority is to create excellent connections to provide a safe and family-friendly city centre

Connecting the different parts of the city centre and reducing the dominance of roads would create an attractive, pedestrian-friendly, environment for local people to enjoy their historic city. It would also help businesses to flourish and attract new visitors to what we know is an interesting and exciting place.

Our city has many unique heritage, retail, leisure and cultural highlights which could be better linked together to create a strong and vibrant centre.

Whilst Leicester benefits from a flat and walkable central area, less sensitive developments in the past have created barriers to easy movement between different areas.



A new blueprint for the City Centre area

Connecting Leicester is our focus for bringing together these special buildings and places through a series of key projects over the next five years. Together these can make the city an attractive destination for shoppers, visitors, businesses and investors and a great place to live.

Some projects have already started:

- **Humberstone Gate East** – highway and public realm improvements to create a better environment for pedestrians, make access to buses easier and reduce congestion.
- **The Golden Mile Regeneration Programme** – improvements to the street environment, shop fronts, signage and marketing.
- **The Story of Leicester** – promotes the city's heritage by improving interpretation and heritage buildings and the historic environment. We are also opening the Council's own heritage buildings for public access including the Magazine, Wygston's House and the Castle.
- **Strengthening St. George's Cultural Quarter** – including the development of Makers Yard, a new creative business workspace at Rutland Street.



Projects over the next five years include:

- **Re-paving Silver Street and the extension of the city centre pedestrian zone to Hotel Street and St. Martins, to create high quality links between the Old Town, retail core, The Lanes, Arcades and Leicester Market.**
- **Extending New Walk into the heart of the city centre and heritage areas by widening footways on Newarke Street connecting to the Magazine. We are also planning an improved pedestrian route along Pocklington's Walk, Berridge Street and Grey Friars creating a better pedestrian link to the retail areas.**
- **Jubilee Square and Pedestrian connections – creation of a new public square as a gateway to the city, linked to improved pedestrian routes and improvements making the inner ring road easier to cross and providing links to shopping and heritage areas, including the Castle and Jewry Wall.**



- **Cathedral Gardens** – a Cathedral led scheme to create new public gardens framing the Cathedral, enhanced by our proposals to improve Guildhall Lane and Peacock Lane as pedestrian friendly routes.



- **Leicester Market redevelopment** – a new indoor food hall and linked public space will be developed, with better connections to High Street, The Lanes, Arcades and St. Martin's Square.



- Supporting smaller retailers with streetscape improvements on **Humberstone Gate, Market Place, Granby Street, Church Gate and Narborough Road/ Braunstone Gate.**



- **Townscape Heritage Project** – a focus on improving historic buildings in the Old Town and bring them back into new business and residential uses.



- Connections to the **Waterside area** and **Abbey Park** - we will look at ways to improve links between the city centre and our green spaces, river and canal side areas.

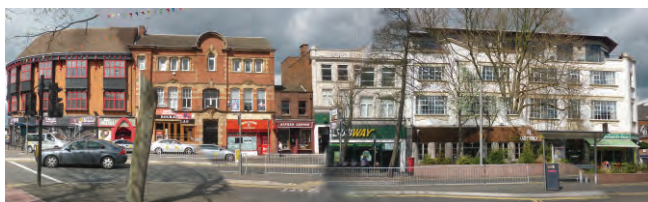


- Improvements to **bus facilities** in the **Haymarket area.**

Jubilee Square

A priority Connecting Leicester project is being planned at St. Nicholas Place. The Jubilee Square scheme provides a unique opportunity to create a new and exciting public space as well as an attractive city centre gateway and better links to shopping, leisure and heritage areas.

Through this project we can improve pedestrian connections and reduce the dominance of the road and vehicles which have created unattractive barriers to moving around, and a poor first impression when entering the city centre.



Road and vehicle dominated entrance to the city centre



Car park does not make the most of a key city centre space

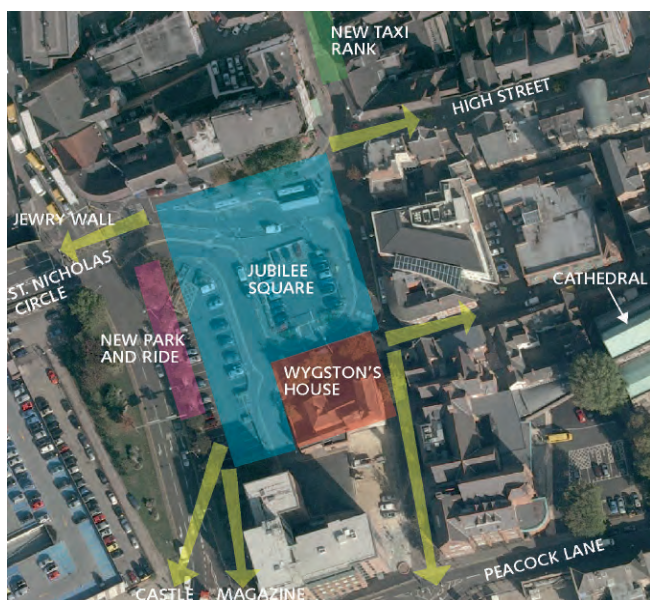


Attractive buildings are not supported by a high quality environment



Wygston's House is hidden behind a wall and parked cars

Jubilee Square area



Jubilee Square project includes the following proposed changes:

- Transforms the area to create an attractive new square and gateway into the city centre.
- Minimises the impact of traffic with a new priority for pedestrians.
- Makes attractive connections between a key city centre arrival point and shopping and heritage areas, helping to increase footfall to businesses.
- Opens up views and access to Wygston's House.
- Relocates the park and ride bus stops to St. Nicholas Circle.
- Provides alternative provision for taxis.
- Introduces new signage and interpretation of the area's history.
- Options are being considered for alternative parking provision and for new spaces for blue badge holders at on-street locations.

Let us know what you think

The proposals will transform St. Nicholas Place and create an area of high quality public space.



St. Nicholas Place now and how it could look



We would like you to tell us your views on our vision for Connecting Leicester, and also our proposals for Jubilee Square.

This is a preliminary consultation on the proposal for Jubilee Square, there will be further opportunities for consultation allowing you to comment on the design and details of this scheme as it progresses.

You can do this by visiting our website:

www.leicester.gov.uk/connectingleicester

Your comments will be used to help us design and take forward the plan for this area.

Closing date for Jubilee Square consultation
30th September 2012.

Closing date for Connecting Leicester consultation
31st October 2012.

If you need help reading this publication or require it in a different format please contact 0116 252 7000.

