

Thurnby Lodge Youth & Community Centre

Information Pack



Thurncourt Road, Leicester LE5 2NG

Tel: 0116 292 4550

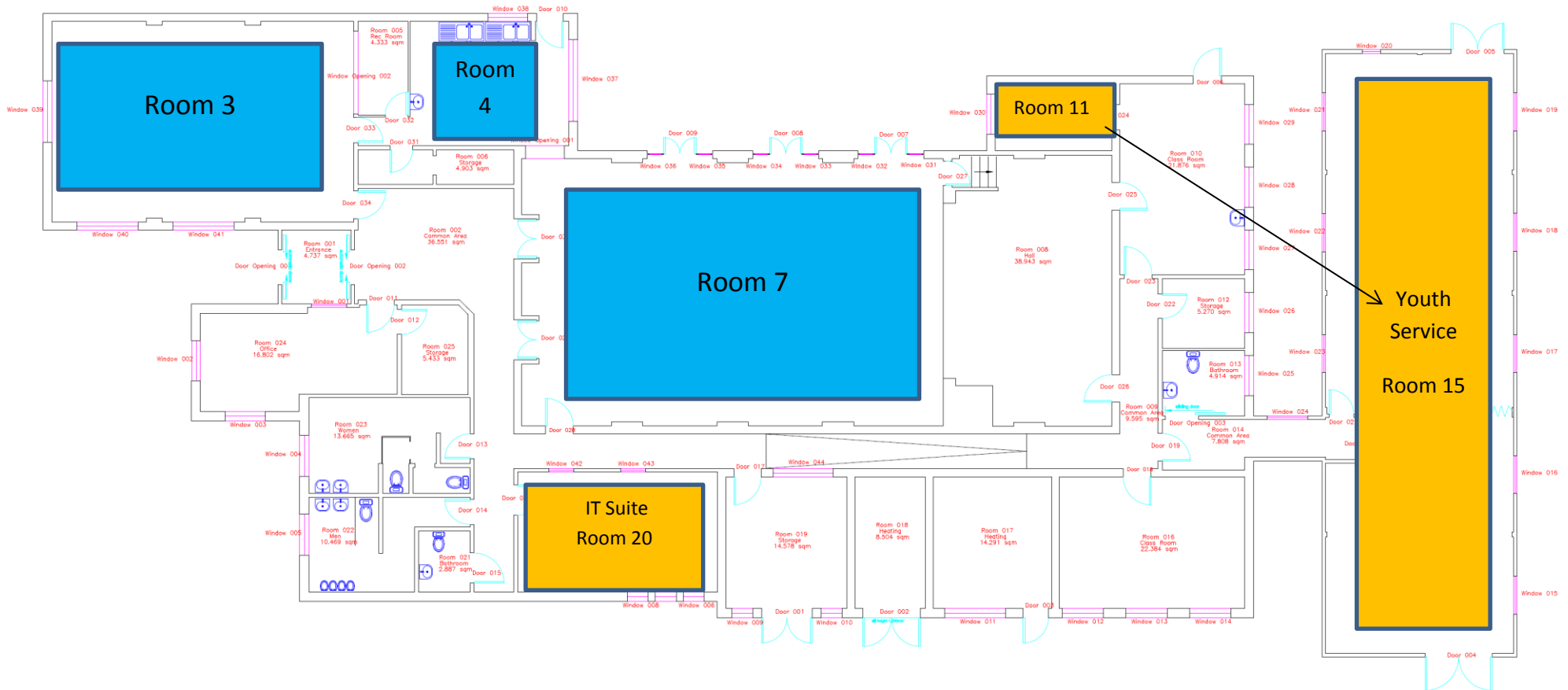
Thurnby Lodge Opening Times

	Available hours	Current Staffed hours	Youth Centre hours
Monday	9am – 10pm	12pm – 10pm (variable)	-
Tuesday	9am – 10pm	9am – 9.30pm (variable)	7pm – 9pm
Wednesday	9am – 10pm	12pm – 9.30pm (variable)	-
Thursday	9am – 10pm	12pm – 9.30pm (variable)	7pm – 9pm
Friday	9am – 10pm	12pm – 9.30pm (variable)	-
Saturday	9am – 10pm	-	-
Sunday	9am – 10pm	-	-

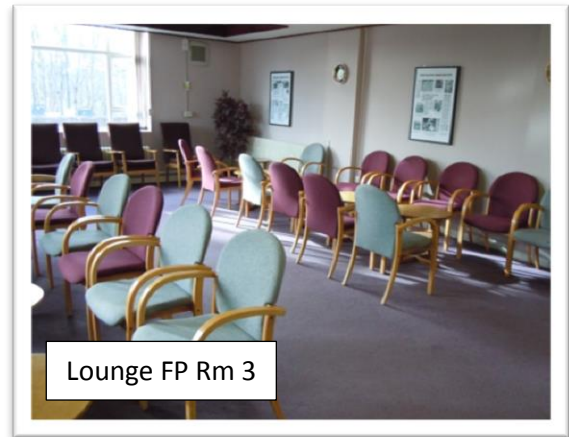
Floor Plan

KEY

-  Available Space
-  Dedicated Space



Photos of Rooms/ Hire cost of Rooms



Band	Facility		Standard Rate	Community Group Rate (Regular Bookings) 65% Discount	Instructor Rate (Regular Bookings) 40% Discount	Commercial Rate
2	Hall	per hour	16.30	5.60	9.70	40.80
3	Lounge	per hour	12.20	4.10	7.00	30.60
3	Small annexe	per hour	12.20	4.10	7.10	30.60
3	Large annexe	per hour	12.20	4.10	7.10	30.60
4	Kitchen	per hour	8.20	3.10	5.10	20.40

Hired Space Breakdown - (June 2016)

	Number of Sessions	Weekly Average users	No. hours used	Weekly Income
Weekly Totals	23 Sessions	587	53 Hours	£251.92

Youth Centre Usage

Session Type	2 x open access sessions weekly
Days & Times	Tuesday 7.00pm – 9.00pm Thursday 7.00pm – 9.00pm
Numbers attending	Footfall 911 (1/9/2014 – 31/8/2015) 92 individual users
Profile of users	55 users aged 13 – 16 37 users aged 17 – 24 5 users have a statement of SEN

Available Space

Vacant Rooms	Capacity	Available Hours per week*
Hall FP Rm 7	100	44
Lounge FP Rm 3	25	74

* The figures are based on the full availability of the centre including un-staffed access to the centre utilising the access control system.

Centre Information

- Car Parking – shared car park with 24 spaces and 2 disabled bays
- Access information - <http://www.disabledgo.com/access-guide/leicester-city-council/thurnby-lodge-community-centre-2>
- Conservation status - None

Key Operating Costs 2015/16 (Excluding VAT)

Service	Actual spend 2015/16

Electricity Utilities	£5,890
Gas Utilities	£3,988
Non Domestic Rates	£3,936
Water Utilities	£680
Sewage Utilities	£600

Income 2015/16

Room Hire based Income 2015 / 2016	£9,848.41
------------------------------------	-----------