

# Justification for Public Space Protection Order in Proposed Zone 2 in Leicester City Council

## CONTENTS

Why are we introducing a public spaces protection order (PSPO) .....	2
Evidence Base Used to Identify ASB Types .....	2
ASB Types stood out in the data analysed. ....	2
Justification for not including certain ASB types within the proposed Zone 2 conditions .....	2
Qualitative Analysis for all prohibitions across all PSPO areas .....	3
• Alcohol-Related Anti-Social Behaviour.....	3
• Drug-Related Anti-Social Behaviour .....	3
• Fireworks.....	3
• Spitting .....	4
• Loitering .....	4
Justification for Zone 2 .....	4
Why Zone 2 Was Selected.....	5
Proportionality of Area Selection .....	5
Why a PSPO Is Needed .....	6

## **Why are we introducing a public spaces protection order (PSPO)**

People living in this area have reported that anti-social behaviour is making everyday life harder, less safe, and less enjoyable. The PSPO is being introduced to protect residents, families, and local businesses by tackling the behaviours that cause the most harm.

The choice of behaviours and areas has been carefully based on evidence, proportionality, and necessity in line with the legal test required to ensure that the necessary grounds have been met.

## **Evidence Base Used to Identify ASB Types**

The ASB types included in the proposed PSPO were chosen based on triangulated data from various sources collected over 12 months, including:

- Police Records
- Leicester City Council ASB Team records
- CCTV incident records

This multi-agency dataset provides reliable, corroborated evidence that the listed ASB behaviours are persistent, have a detrimental impact on the quality of life and are interconnected with other ASB types.

## **ASB Types stood out in the data analysed.**

1. Motor vehicle misuse
2. Drugs-related anti-social behaviour
3. Alcohol-related anti-social behaviour
4. Vandalism and Fireworks
5. Loitering linked to harassment, alarm and distress
6. Spitting

## **Justification for not including certain ASB types within the proposed Zone 2 conditions**

'Motor Vehicle misuse' appeared frequently, covering various behaviours. Many nuisances caused by vehicles are addressed by existing laws and enforced by different agencies. Findings will be shared with partners to explore further mitigation. 'Vandalism and Graffiti' are excluded because they are criminal offences with penalties overriding the Public Space Protection Order. The Council will continue analysing data to ensure that any new measures to address anti-social behaviour can be properly enforced.

The remaining behaviours were selected because:

- They occur frequently and repeatedly, highlighting the persistence.



- They generate significant secondary harm, such as noise, intimidation, litter, property damage, and public safety risk, highlighting the detrimental impact.
- Existing legislation and enforcement powers have not been sufficient to prevent recurrence in these locations, nor would they be proportionate based on the lack of repeat offenders.

### **Qualitative Analysis for all prohibitions across all PSPO areas**

To ensure that each condition of the test is met, a further deep dive into the qualitative data was also considered for all conditions contained in both 'Zone 2'. Below is a summary of some of the impacts that result from these behaviours. Please note that this information is taken directly from public and community reports.

- **Alcohol-Related Anti-Social Behaviour**

Residents often report large groups drinking in the street, leaving broken glass, and creating noise and disturbances. These problems make people feel unsafe and discourage families from using parks and play areas.

'I see people drinking here all the time. I take my nephew most evenings. It has glass and rubbish strewn all over the play area and football cage. The play area is ripped and dilapidated. Kids play here everyday'

'20+ males drinking in the street every day makes me feel anxious about walking home from work'

- **Drug-Related Anti-Social Behaviour**

Public drug use creates fear and poses serious health dangers. Needles are discarded in areas where children and pets walk, and some behaviours have been highly distressing for residents.

'Man stood in doorway injecting something into his genitals in public, female was very distressed at seeing this'

'People parked in their car throw syringes out the window onto footpath where people walk'

- **Fireworks**

Fireworks are being misused irresponsibly, risking people's safety and damaging community areas.

'Boardwalk burned down causing substantial damage'

'50+ PEOPLE THROWING FIREWORKS NEAR CROWDS'

- **Spitting**

Spitting, paan spitting, and gum litter contribute to hygiene issues and degrade street cleanliness. Some residents have encountered aggression when requesting these behaviours to cease.

‘Regularly parks up and spitting paan and chewing tobacco. Asked to stop numerous times but attempts to fight.’

‘Lots of chewing gum is littered around the city and the Council are having to waste money cleaning this up, spitting is disgusting and a health hazard, when will you deal with it?’

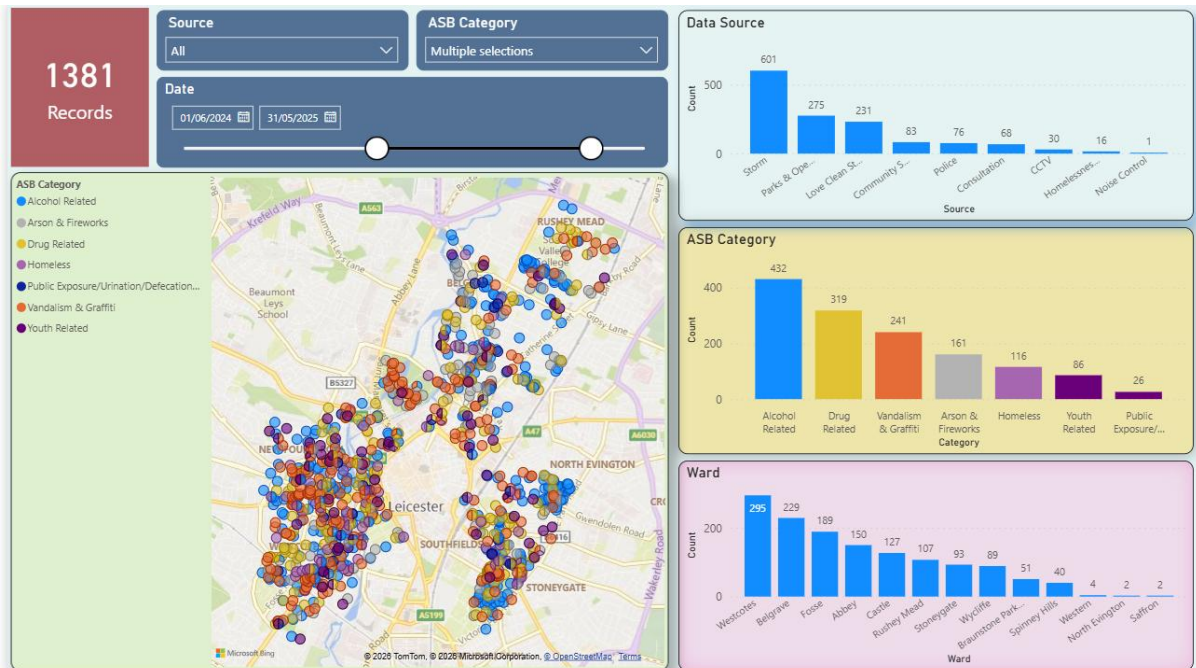
- **Loitering**

Groups and individuals blocking entrances, bus stops, and walkways are making people feel unsafe and unable to use public spaces.

‘6 Males sat together outside the block of flats where I live. I asked them to move but they refused and I had to go back inside my flat and call the police, police did not come’

‘bus stop cannot be used as its full of alcoholics hanging around in it’

### Justification for Zone 2



**Picture 1: Concentrated ASB by categories in the outer City centre**

## Why Zone 2 Was Selected

Zone 2, just beyond the city centre, was identified as a major hotspot based on cumulative data analysis. The data show that incidents here occur far more frequently than in other parts of the city.

Many of these behaviours extend from the city centre, especially in the evenings and on weekends. The area encompasses 89.6% Residential streets, parks and open spaces, transport routes, and commercial premises. The incident density of 128.2 per sq. km for ASB in this area is high compared to the rest of the city, except for Zone 1, which already has a PSPO in place. This mix increases the risk of noise disturbances, public intimidation, road-safety issues, and damage to public and private property.

## Proportionality of Area Selection

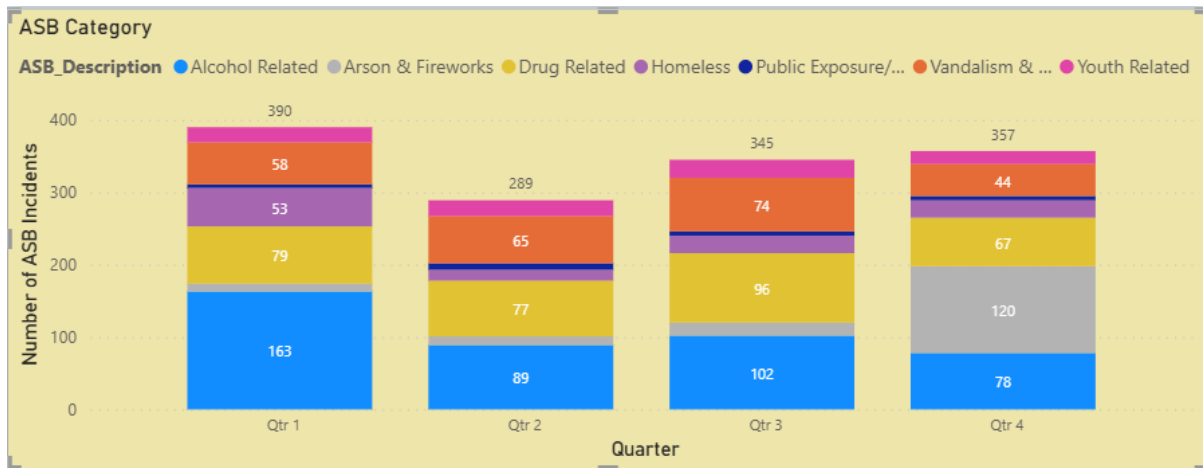
While similar ASB behaviours are seen elsewhere in Leicester, the frequency and intensity of incidents in Zone 2 are significantly higher, as indicated by frequent police and council interventions. Persistent complaints from residents and businesses highlight the detrimental impact on affected communities.

Zone	Area [m2]	Area [%City]	ASB Count	ASB [%City]	ASB Density [km2]
1	1555889	2.1%	787	18.3%	506
2	10569314	14.4%	1355	31.5%	128
Non-Zone	61216701	83.5%	2155	50.2%	35
City Boundary	73341904	100.0%	4297	100.0%	59

This analysis shows that the proposed Zone 2 represents only 14.4% of the City's geographical area, yet over 31% of all anti-social behaviour reported occurs in this area. The only other area where the comparison for geographical size and ASB concentration is shown is in the first row of this table, 'Zone 1', which is already covered by an appropriate Public Space Protection Order.

The PSPO is therefore designed to target specific areas rather than cover the entire city by default, reflecting a graduated approach to addressing the reported issues.

These ASB Categories consistently happen throughout the year. Each behaviour is clearly defined, evidence-based, and connected to measurable community harm.



**Picture 4:** ASB by category across the four quarters of the last 12 months (starting Jan), indicating persistent issues that follow a correlation/seasonal pattern

### Why a PSPO Is Needed

These issues are ongoing and significantly affect many individuals' daily lives. Residents have consistently expressed feelings of insecurity, concern, or difficulty in using their local neighbourhood spaces.

A PSPO will assist by:

- Providing officers with stronger powers to address harmful behaviours
- Safeguarding children, families, and vulnerable residents
- Enhancing safety and approachability in parks, streets, and public spaces
- Promoting long-term improvements within the community

This is a proportionate and essential step to enhance the quality of life for everyone in the area.