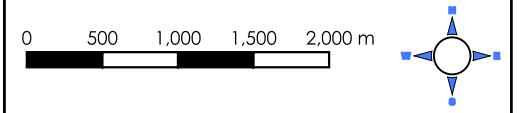


Leicester City Council

# Strategic Flood Risk Assessment 2022

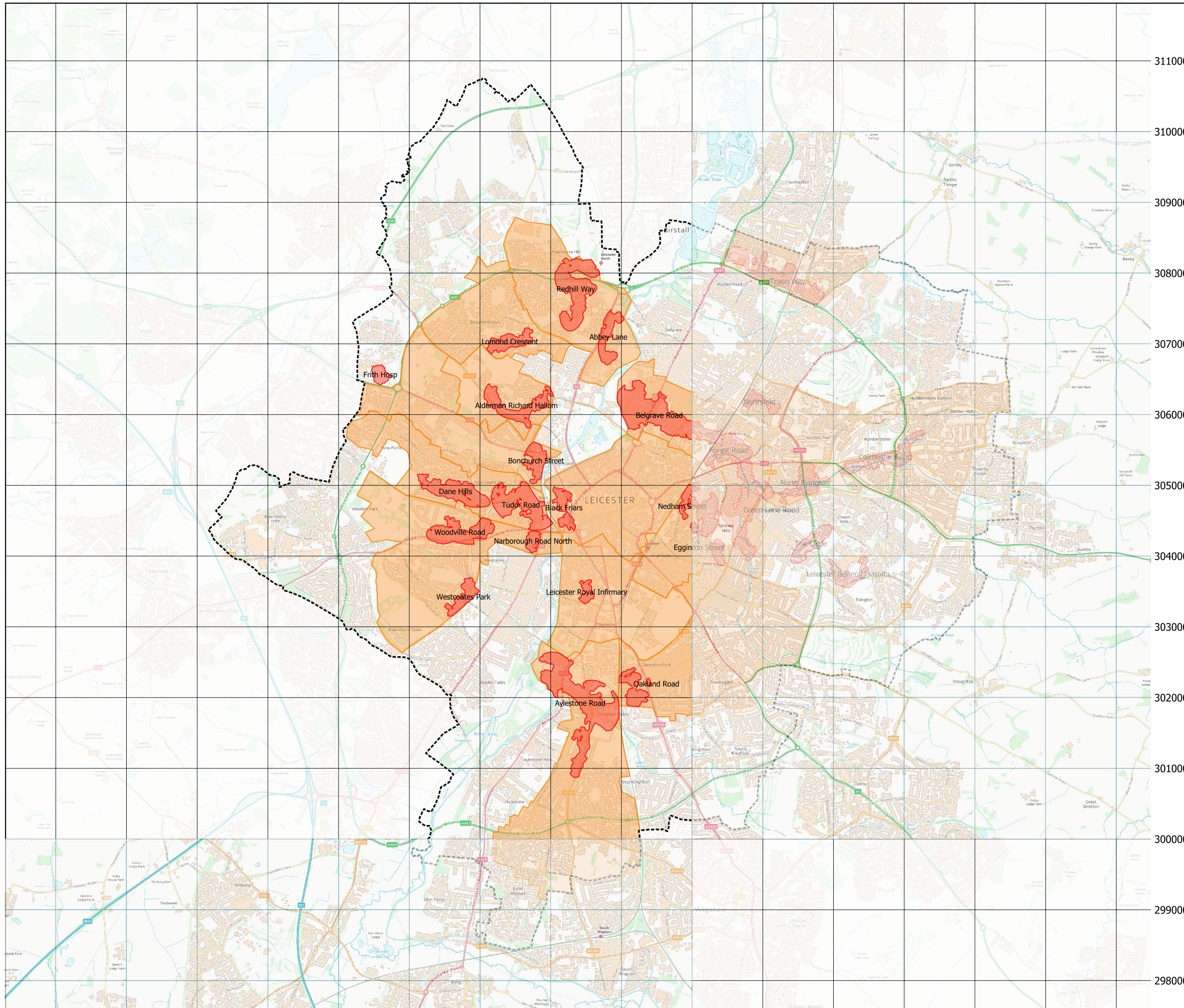
## Drawing Title Surface Water Hotspots and Critical Drainage Areas

Map Number: Scale: 1:50000 @A3



### LEGEND

- Leicester administrative boundary
- Surface Water Hotspots
- Critical Drainage Areas



This map was prepared solely for the Leicester 2022 Strategic Flood Risk Assessment. Flood risk data is periodically updated by the Risk Management Authorities (RMAs). When preparing a Flood Risk Assessment, planning applicants and consultants must obtain the most up to date information concerning flood risk from the RMAs. New information may be available which supercedes the data displayed on this map. This map is catchment scale and should not be relied upon at a local (planning application) scale. Contains OS data © Crown Copyright [and database right] (2022). Contains Environment Agency data © Copyright and/ or database right 2022.